

thinking



Approximately



Percent of Wylie ISD students are enrolled in special and gifted education or other programs for diverse learners. That is 1 in every 5 students.

Contact SAGE at:

[sage@ptawyliecouncil.com](mailto:sage@ptawyliecouncil.com)

You can also like our page

on Facebook:

SAGE of Wylie ISD  
Council of PTAs

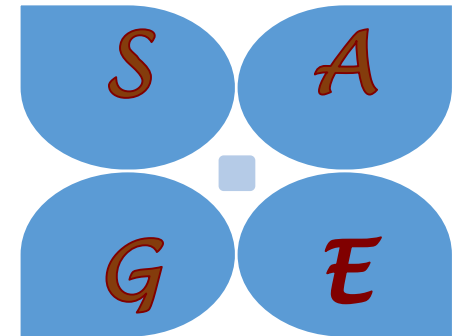
CAMPUS SAGE CHAIR contact

## Who are we?

The Wylie ISD Council of PTAs created the SAGE committee with diverse learners in mind. This is your opportunity to connect with other parents and educators in Wylie ISD.



## Wylie ISD Council of PTAs



### Special and Gifted Education

*Thinking outside of the box*

The *What, Who & Why* of SAGE

### What is SAGE?

Special  
And  
Gifted  
Education

*The purpose of SAGE is to provide communication, resources, and support for teachers and families who have students enrolled in the W.I.N.G.S (Wylie's Inquisitive and Naturally Gifted Students) and Special Education programs in Wylie ISD. SAGE also includes other programs for diverse learners in Wylie ISD.*

Why?

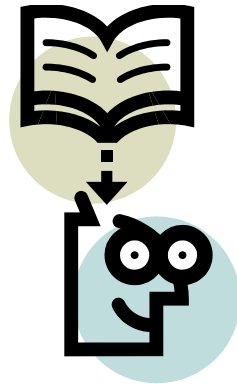
## Support

SAGE provides support for parents and educators. One purpose of SAGE is to give appreciation to the educators who work hard for our diverse learners. SAGE chairs at the campus level offer support for educators, other PTA board members, and parents. Contact your campus SAGE chair for more information on specific events and appreciation opportunities at your campus.

**SAGE is compiling a list of Community Resources and support groups. This list will be available on the Wylie ISD Council of PTAs webpage.**

*SAGE encourages parents, educators, and community members to share information on support groups and resources.*

**Send information to:**  
[sage@ptawyliecouncil.com](mailto:sage@ptawyliecouncil.com)



## Resources and Education

SAGE has been bringing educational classes for families and educators pertaining to special, gifted and diverse learning. SAGE welcomes ideas or information for future topics. Check our Facebook Page or find SAGE on the Wylie ISD Council of PTAs website for more information at:

[www.ptawyliecouncil.com](http://www.ptawyliecouncil.com)

SAGE offers hands on educational workshops in Wylie ISD Schools for students called CARE: **Creating Awareness & Respect Education.**

Contact your campus SAGE chair for information on campus events.



## Communication

SAGE strives to provide exceptional communication to parents, educators and the community. SAGE communicates through newsletters, Facebook, Wylie ISD Council of PTAs webpage for SAGE. If you would like to sign up to receive the SAGE newsletter send your name and email to:

[sage@ptawyliecouncil.com](mailto:sage@ptawyliecouncil.com)

**SAGE also provides information from surrounding school districts and communities. You can find this information on our Facebook page at:**

**SAGE of Wylie ISD  
Council of PTAs**